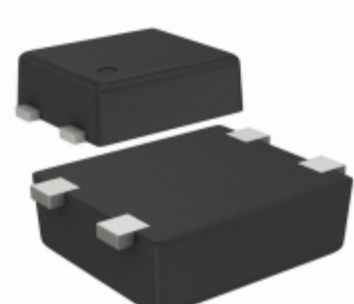


## S-80838CLPF-B6XTFG



**SII** SII Semiconductor Corporation

**Part Number:** [S-80838CLPF-B6XTFG](#)

**Manufacturer:** [SII Semiconductor Corporation](#)

**Description:** IC VOLT DETECTOR 3.8V SNT-4A

**Data sheet:** [S-808xxC Series](#)

**RoHS Status:** Lead free / RoHS Compliant

**Ship From:** Hong Kong

**Shipment Way:** DHL/Fedex/TNT/UPS/EMS

Images are for reference only.  
See Product Specifications for product details.  
**Buy S-80838CLPF-B6XTFG with confidence from Component-World.HK, 1 Year Warranty**

[Request For Quotation](#)

### PRODUCT PARAMETER

<b>Part Number</b>	S-80838CLPF-B6XTFG	<b>Manufacturer</b>	<a href="#">SII Semiconductor Corporation</a>
<b>Description</b>	IC VOLT DETECTOR 3.8V SNT-4A	<b>Lead Free Status / RoHS Status</b>	Lead free / RoHS Compliant
<b>Quantity Available</b>	5144 pcs	<b>Data sheet</b>	<a href="#">S-808xxC Series</a>
<b>Category</b>	<a href="#">Integrated Circuits (ICs)</a>	<b>Voltage - Threshold</b>	3.8V
<b>Type</b>	Voltage Detector	<b>Supplier Device Package</b>	SNT-4A
<b>Series</b>	S-808xxC	<b>Reset Timeout</b>	-
<b>Reset</b>	Active Low	<b>Packaging</b>	Tape & Reel (TR)
<b>Package / Case</b>	4-SMD, Flat Leads	<b>Output</b>	Push-Pull, Totem Pole
<b>Operating Temperature</b>	-40°C ~ 85°C (TA)	<b>Number of Voltages Monitored</b>	1
<b>Mounting Type</b>	Surface Mount	<b>Moisture Sensitivity Level (MSL)</b>	1 (Unlimited)
<b>Lead Free Status / RoHS Status</b>	Lead free / RoHS Compliant	<b>Detailed Description</b>	Supervisor Push-Pull, Totem Pole 1 Channel SNT-4A

Component-World.com is a Reliable Stocking Distributor of Electronic Components. We specialize in all SII Semiconductor Corporation series electronic components. We have 5144 pieces of SII Semiconductor Corporation S-80838CLPF-B6XTFG in stock available now. Request a quote from electronics components distributor at Component-World.com, our sales team will contact you within 24 hours.  
RFQ Email: [info@Components-World.com](mailto:info@Components-World.com)

### RELATED PRODUCTS

	<b>Part#:</b> <a href="#">S-80837CNUA-B8WT2G</a> <b>Description:</b> IC VOLT DETECTOR 3.7V SOT89-3	<b>Manufacturers:</b> <a href="#">SII Semiconductor Corporation</a>	<a href="#">RFQ</a>
	<b>Part#:</b> <a href="#">S-80838CLPF-B6XTFU</a> <b>Description:</b> IC VOLT DETECTOR 3.8V SNT-4A	<b>Manufacturers:</b> <a href="#">SII Semiconductor Corporation</a>	<a href="#">RFQ</a>
	<b>Part#:</b> <a href="#">S-80837CNUA-B8WT2U</a> <b>Description:</b> IC VOLT DETECTOR 3.7V SOT89-3	<b>Manufacturers:</b> <a href="#">SII Semiconductor Corporation</a>	<a href="#">RFQ</a>
	<b>Part#:</b> <a href="#">S-80837CNY-B2-U</a> <b>Description:</b> IC VOLT DETECTOR 3.7V TO-92	<b>Manufacturers:</b> <a href="#">SII Semiconductor Corporation</a>	<a href="#">RFQ</a>
	<b>Part#:</b> <a href="#">S-80838CLY-Z2-U</a> <b>Description:</b> IC VOLT DETECTOR 3.8V TO-92	<b>Manufacturers:</b> <a href="#">SII Semiconductor Corporation</a>	<a href="#">RFQ</a>
	<b>Part#:</b> <a href="#">S-80838CNMC-B8XT2U</a> <b>Description:</b> IC VOLT DETECTOR 3.8V SOT23-5	<b>Manufacturers:</b> <a href="#">SII Semiconductor Corporation</a>	<a href="#">RFQ</a>
	<b>Part#:</b> <a href="#">S-80838CLMC-B6XT2G</a> <b>Description:</b> IC VOLT DETECTOR 3.8V SOT23-5	<b>Manufacturers:</b> <a href="#">SII Semiconductor Corporation</a>	<a href="#">RFQ</a>
	<b>Part#:</b> <a href="#">S-80838CLUA-B6XT2U</a> <b>Description:</b> IC VOLT DETECTOR 3.8V SOT89-3	<b>Manufacturers:</b> <a href="#">SII Semiconductor Corporation</a>	<a href="#">RFQ</a>
	<b>Part#:</b> <a href="#">S-80838CLY-B-G</a> <b>Description:</b> IC VOLT DETECTOR 3.8V TO-92	<b>Manufacturers:</b> <a href="#">SII Semiconductor Corporation</a>	<a href="#">RFQ</a>
	<b>Part#:</b> <a href="#">S-80838CLUA-B6XT2G</a> <b>Description:</b> IC VOLT DETECTOR 3.8V SOT89-3	<b>Manufacturers:</b> <a href="#">SII Semiconductor Corporation</a>	<a href="#">RFQ</a>
	<b>Part#:</b> <a href="#">S-80837CNY-Z2-U</a> <b>Description:</b> IC VOLT DETECTOR 3.7V TO-92	<b>Manufacturers:</b> <a href="#">SII Semiconductor Corporation</a>	<a href="#">RFQ</a>
	<b>Part#:</b> <a href="#">S-80838CNNB-B8XT2U</a> <b>Description:</b> IC VOLT DETECTOR 3.8V SC-82AB	<b>Manufacturers:</b> <a href="#">SII Semiconductor Corporation</a>	<a href="#">RFQ</a>
	<b>Part#:</b> <a href="#">S-80837CNPF-B8WTFU</a> <b>Description:</b> IC VOLT DETECTOR 3.7V SNT-4A	<b>Manufacturers:</b> <a href="#">SII Semiconductor Corporation</a>	<a href="#">RFQ</a>
	<b>Part#:</b> <a href="#">S-80838CLNB-B6XT2U</a> <b>Description:</b> IC VOLT DETECTOR 3.8V SC-82AB	<b>Manufacturers:</b> <a href="#">SII Semiconductor Corporation</a>	<a href="#">RFQ</a>
	<b>Part#:</b> <a href="#">S-80838CNNB-B8XT2G</a> <b>Description:</b> IC VOLT DETECTOR 3.8V SC-82AB	<b>Manufacturers:</b> <a href="#">SII Semiconductor Corporation</a>	<a href="#">RFQ</a>
	<b>Part#:</b> <a href="#">S-80838CNMC-B8XT2G</a> <b>Description:</b> IC VOLT DETECTOR 3.8V SOT23-5	<b>Manufacturers:</b> <a href="#">SII Semiconductor Corporation</a>	<a href="#">RFQ</a>
	<b>Part#:</b> <a href="#">S-80838CLNB-B6XT2G</a> <b>Description:</b> IC VOLT DETECTOR 3.8V SC-82AB	<b>Manufacturers:</b> <a href="#">SII Semiconductor Corporation</a>	<a href="#">RFQ</a>
	<b>Part#:</b> <a href="#">S-80838CLMC-B6XT2U</a> <b>Description:</b> IC VOLT DETECTOR 3.8V SOT23-5	<b>Manufacturers:</b> <a href="#">SII Semiconductor Corporation</a>	<a href="#">RFQ</a>
	<b>Part#:</b> <a href="#">S-80837CNY-B-G</a> <b>Description:</b> IC VOLT DETECTOR 3.7V TO-92	<b>Manufacturers:</b> <a href="#">SII Semiconductor Corporation</a>	<a href="#">RFQ</a>
	<b>Part#:</b> <a href="#">S-80838CLY-B2-U</a> <b>Description:</b> IC VOLT DETECTOR 3.8V TO-92	<b>Manufacturers:</b> <a href="#">SII Semiconductor Corporation</a>	<a href="#">RFQ</a>

### Related keywords for S-80838CLPF-B6XTFG

SII Semiconductor Corporation S-80838CLPF-B6XTFG	S-80838CLPF-B6XTFG distributor	S-80838CLPF-B6XTFG supplier	S-80838CLPF-B6XTFG price
	S-80838CLPF-B6XTFG download datasheet	S-80838CLPF-B6XTFG datasheet	S-80838CLPF-B6XTFG stock
buy S-80838CLPF-B6XTFG	SII Semiconductor Corporation S-80838CLPF-B6XTFG		